

# From the EXAM ROOM TO THE OPERATING ROOM

## THE OTOPET-USA DIGITAL VETSCOPE TOWER SYSTEM

### One System. Multiple Applications

Versatile in every area of your clinic, the OtoPet-USA Digital VetScope Tower System offers multiple diagnostic and procedural applications.

#### System Includes:

- VetScope Probe – **MADE IN THE USA** – with 2 mm Channel & Mini Camera
- Computer
- Imaging Software
- Keyboard, Trackball Mouse, Stop Action Foot Pedal, Cables
- Flat Screen Monitor
- Industrial Grade Cart
- Halogen Lightsource
- Earigator
- Biopsy Tool, Stainless Curette, Cleaning Brush
- Full Image Lens
- One Year Warranty
- Printer
- Endoscope Coupler and other instruments sold separately



• Otoscopy



• Dental Exams



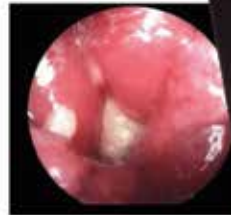
• Ophthalmology



• Biopsies



• Vaginoscopy



• Rectal Exams



• Tracheoscopy



• Dermatology



#### Additional Applications:

Rhinoscopy, Radiographs, Cytology, Endoscopy, Digital Database, Color Photographs, Laser Surgery

OtoPet-USA™ is a division of DermaZoo™

[www.OTOPET-USA.com](http://www.OTOPET-USA.com) or call 301-365-0192